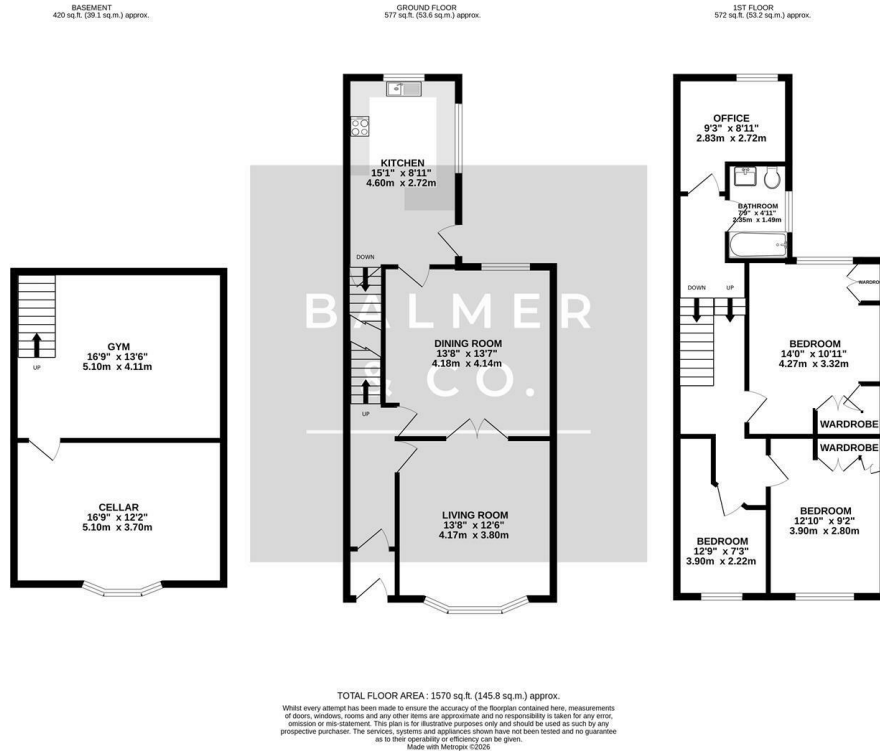


Firs Lane, Leigh, WN7 4SU
£180,000

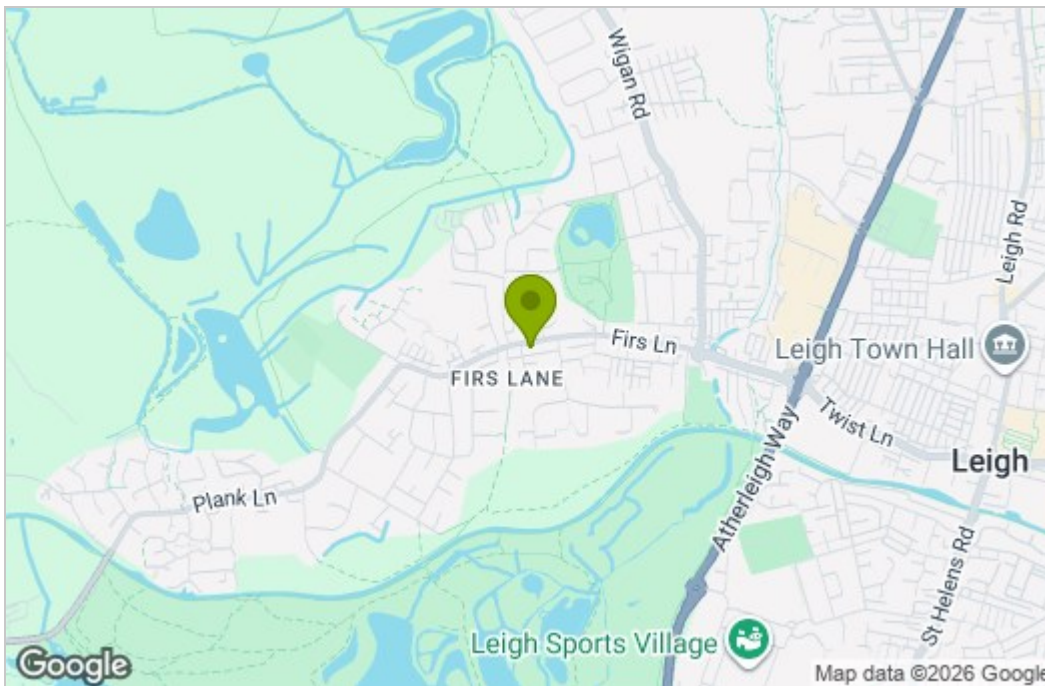


BALMER & CO in LEIGH are delighted to offer FOR SALE this fantastic four bedroom end terraced property, located on Firs Lane in Leigh. Offering spacious accommodation which is well presented throughout and conveniently placed only a short drive from Leigh town centre, it would be perfect for young or growing families. The ground floor comprising in brief; vestibule, hallway, bay fronted living room, second reception room with multi fuel burner and a modern fitted kitchen. To the first floor is a master bedroom with fitted wardrobes, a second double bedroom with fitted wardrobes, two single bedrooms, one currently used as an office, and a three piece bathroom suite. A large cellar which is currently used as a gym and a workshop completes the internal accommodation. Externally, the property has a garden frontage whilst to the rear there is a low maintenance, South facing rear yard which can also be used for off road parking. Early viewings highly recommended, all enquiries welcome.

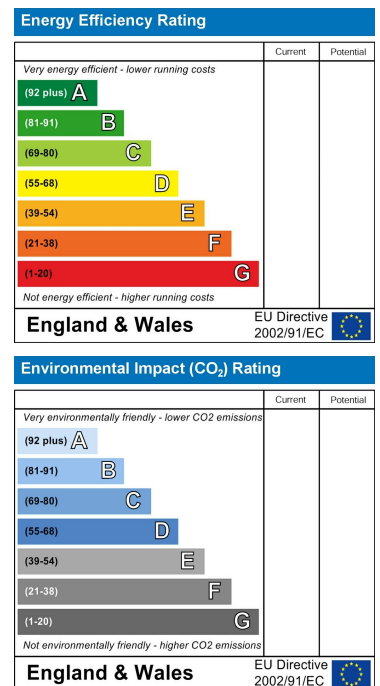
Floor Plan



Area Map



Energy Efficiency Graph



These particulars, whilst believed to be accurate are set out as a general outline only for guidance and do not constitute any part of an offer or contract. Intending purchasers should not rely on them as statements of representation of fact, but must satisfy themselves by inspection or otherwise as to their accuracy. No person in this firm's employment has the authority to make or give any representation or warranty in respect of the property.